

Deep Sky Observations

Object Description

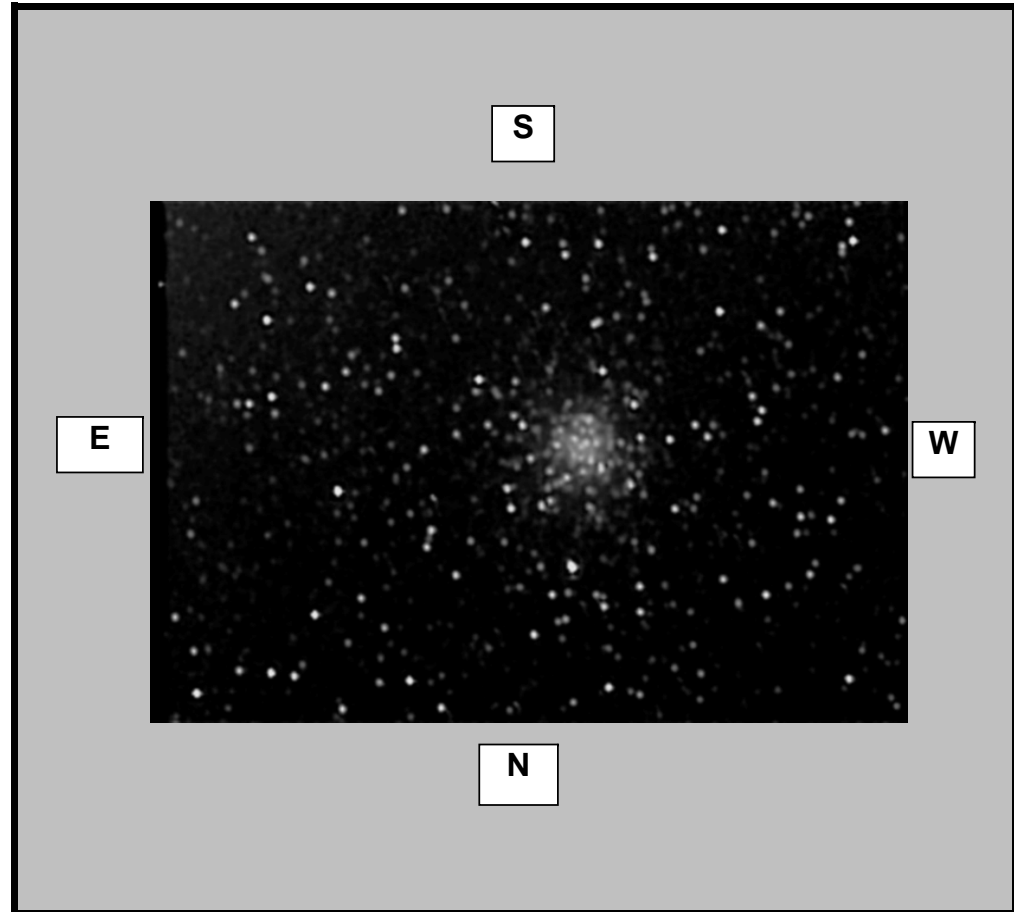
Object Name	
Messier	M56
New General Catalogue	6779
Constellation	Lyra
Type	Globular Cluster
Magnitude	8.3
Distance (Light Years)	32,900
Right Ascension	19 16.3
Declination	+30:11
Size	8.8'
Diameter	84 Light Years
Composition	

Observations

Date (DD/MM/YYYY)	09/06/2007
Time (24 hr)	00:30am
Location	Baldrine, Isle of Man
Longitude	4°24' W
Latitude	54°12' N
Seeing (1=High - 5= Low)	1 2 3 4 5
Transparency (1=High - 5= Low)	1 2 3 4 5

Equipment

Telescope	WO FLT110 4.3inch APO
Mount	EQ6 Skyscan Pro
Eyepiece	None
Barlow	TV 2.5x Powermate
Camera	GSTAR-EX CCD
Magnification (Focal Length)	FL=1787.5mm
Field of View (True)	12.0 x 9.63 [0.98 arcsec]
Reducer	None
Filter	None
Exposures	15 Minutes X128 senseup



Observation Notes

Stacked and aligned using Registax
 Processed using Registax, Photoshop & IMM

Very average conditions (slightly moist milky sky)