

Deep Sky Observations

Object Description

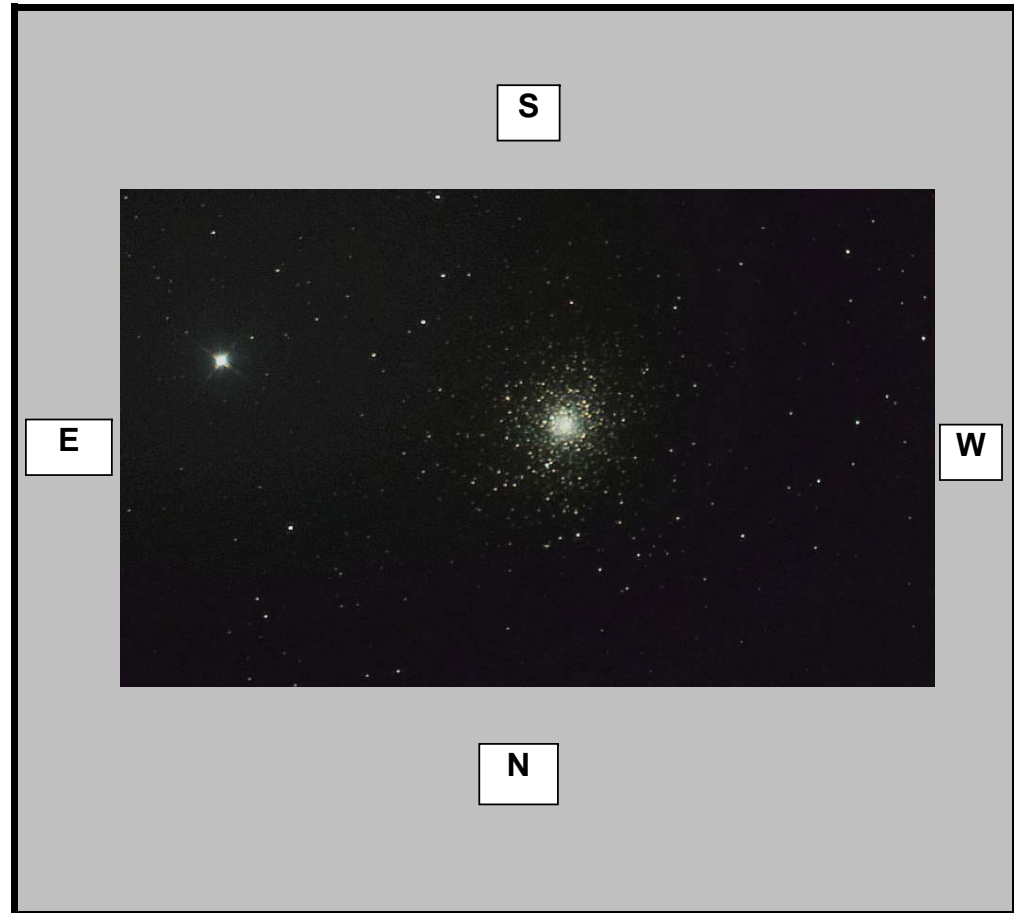
Object Name	
Messier	M5
New General Catalogue	5904
Constellation	Serpens
Type	Globular Cluster
Magnitude	6.65
Distance (Light Years)	24,500
Right Ascension	15 18.3
Declination	+02:04
Size	23.0'
Diameter	165 Light Years
Composition	Estimated 500,000 Stars

Observations

Date (DD/MM/YYYY)	24/05/2008
Time (24 hr)	23:50 pm
Location	Baldrine, Isle of Man
Longitude	4°24' W
Latitude	54°12' N
Seeing (1=High - 5= Low)	1 2 3 4 5
Transparency (1=High - 5= Low)	1 2 3 4 5

Equipment

Telescope	Takahashi Epsilon 160
Mount	EQ6 Skyscan Pro
Eyepiece	None
Barlow	None
Camera	Canon Rebel Xti
Magnification (Focal Length)	FL=530mm
Field of View (True)	40.48 x 32.47 [3.29 arcsec]
Reducer	None
Filter	None
Exposures	62 x 60 Second Exposures



Observation Notes

ISO 1600
Imaged in dark skies
Unguided