

# Deep Sky Observations

## Object Description

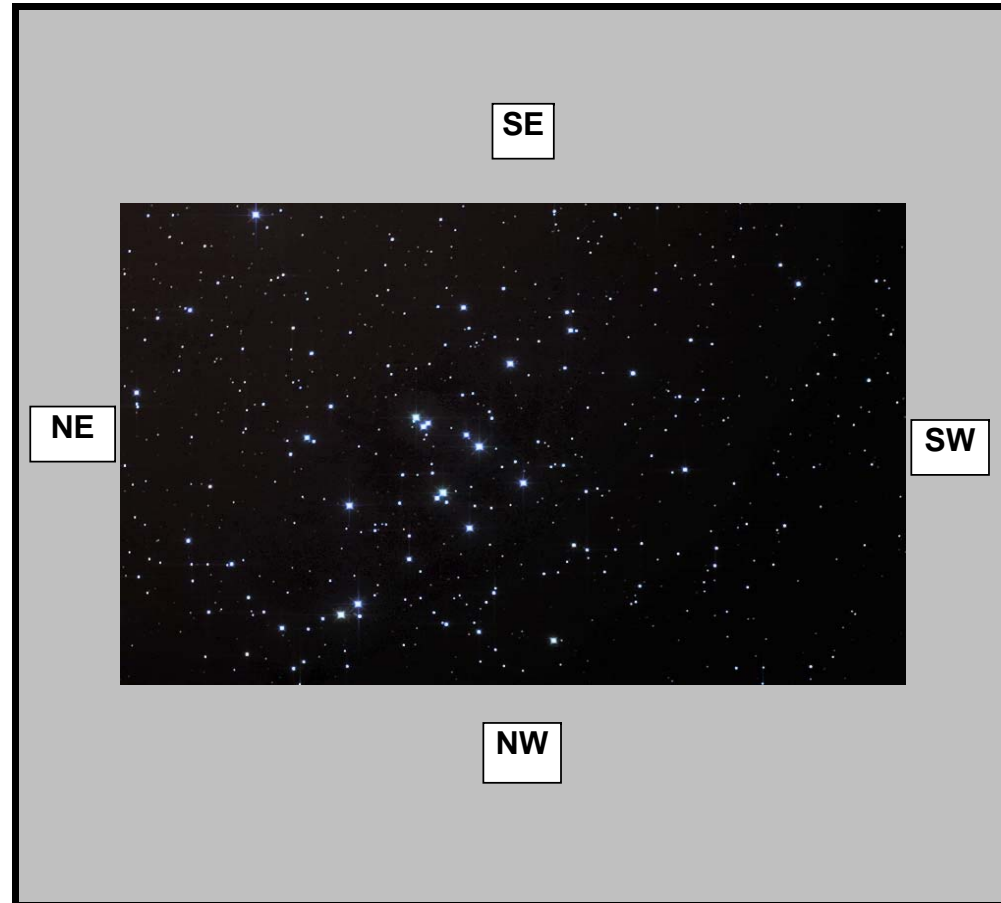
Object Name	<u>Beehive Cluster</u>
Messier	<u>M44</u>
New General Catalogue	<u>2632</u>
Constellation	<u>Cancer</u>
Type	<u>Open Cluster</u>
Magnitude	<u>3.70</u>
Distance (Light Years)	<u>577</u>
Right Ascension	<u>08 40.1</u>
Declination	<u>+19:51</u>
Size	<u>95.0'</u>
Diameter	<u>16 Light Years</u>
Composition	<u>Estimated 350 Stars</u>

## Observations

Date (DD/MM/YYYY)	<u>7/03/2008</u>
Time (24 hr)	<u>20:00pm</u>
Location	<u>Baldrine, Isle of Man</u>
Longitude	<u>4°24' W</u>
Latitude	<u>54°12' N</u>
Seeing (1=High - 5= Low)	<u>1 2 3 4 5</u>
Transparency (1=High - 5= Low)	<u>1 2 3 4 5</u>

## Equipment

Telescope	<u>Takahashi Epsilon 160</u>
Mount	<u>EQ6 Skyscan Pro</u>
Eyepiece	<u>None</u>
Barlow	<u>None</u>
Camera	<u>Canon EOS 350 DSLR</u>
Magnification (Focal Length)	<u>FL=530mm</u>
Field of View (True)	<u>40.48 x 32.47 [3.29 arcsec]</u>
Reducer	<u>None</u>
Filter	<u>None</u>
Exposures	<u>37 Mins 56x40mins</u>



## Observation Notes

Very cloudy night

Manually guided

ISO 1600