

Deep Sky Observations

Object Description

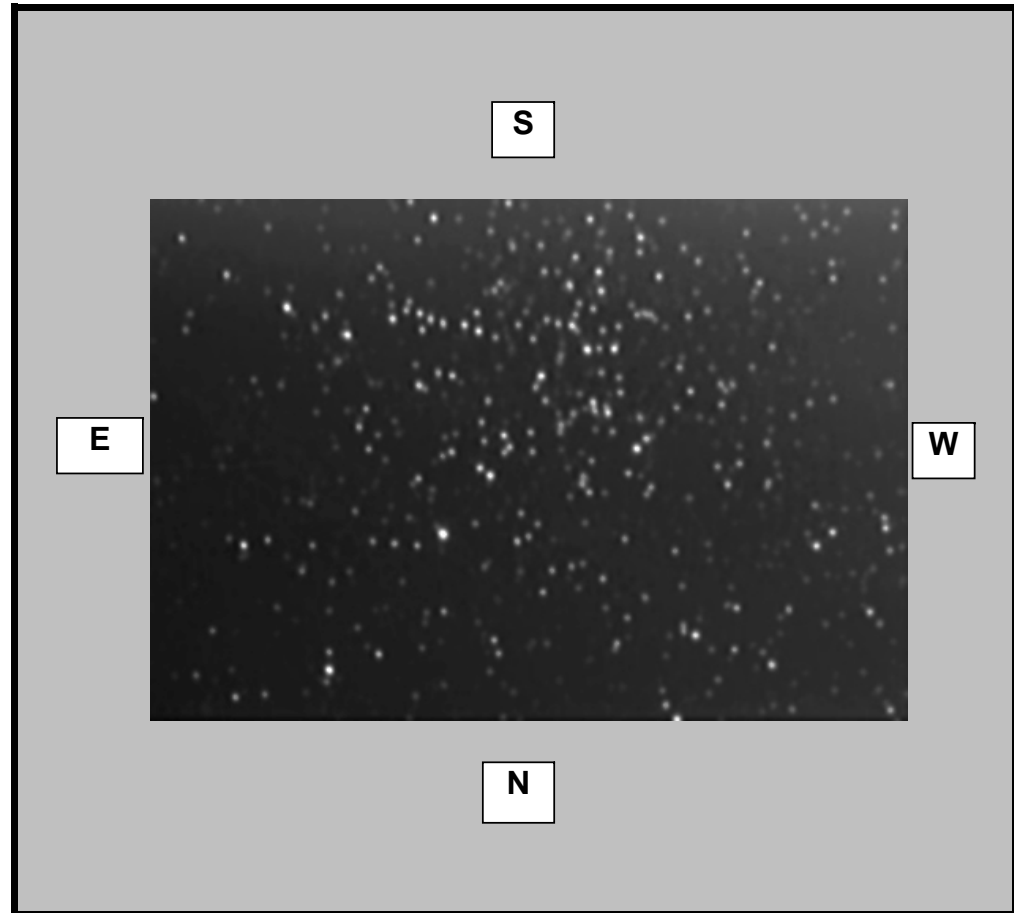
Object Name	_____
Messier	M38
New General Catalogue	1912
Constellation	Auriga
Type	Open Cluster
Magnitude	7.40
Distance (Light Years)	4,200
Right Ascension	05 28.4
Declination	+35:51
Size	21.0'
Diameter	_____
Composition	_____

Observations

Date (DD/MM/YYYY)	23/11/2007
Time (24 hr)	00:40pm
Location	Baldrine, Isle of Man
Longitude	4°24' W
Latitude	54°12' N
Seeing (1=High - 5= Low)	1 2 3 4 5
Transparency (1=High - 5= Low)	1 2 3 4 5

Equipment

Telescope	Tak Epsilon 160
Mount	EQ6 Skyscan Pro
Eyepiece	None
Barlow	None
Camera	GSTAR-EX CCD
Magnification (Focal Length)	FL=530mm
Field of View (True)	40.48 x 32.47 [3.29 arcsec]
Reducer	None
Filter	None
Exposures	5 Minutes 128X Senseup



Observation Notes

Moon lit skies
