

Deep Sky Observations

Object Description

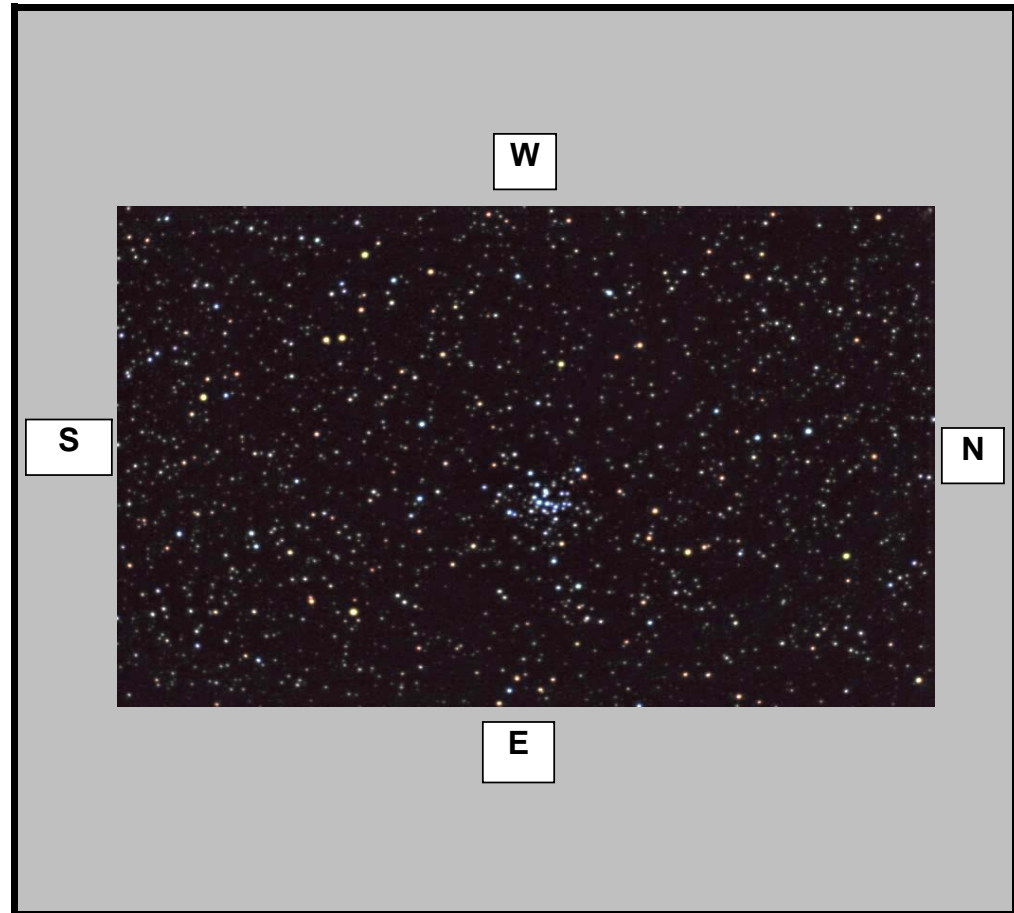
Object Name	
Messier	M36
New General Catalogue	1960
Constellation	Auriga
Type	Open Cluster
Magnitude	6.30
Distance (Light Years)	4,100
Right Ascension	05 36.1
Declination	+34:08
Size	12.0'
Diameter	
Composition	

Observations

Date (DD/MM/YYYY)	18/02/2008
Time (24 hr)	10:17pm
Location	Baldrine, Isle of Man
Longitude	4°24' W
Latitude	54°12' N
Seeing (1=High - 5= Low)	1 2 3 4 5
Transparency (1=High - 5= Low)	1 2 3 4 5

Equipment

Telescope	Tak Epsilon 160
Mount	EQ6 Skyscan Pro
Eyepiece	None
Barlow	None
Camera	Canon EOS350 DSLR
Magnification (Focal Length)	FL=530mm
Field of View (True)	40.48 x 32.47 [3.29 arcsec]
Reducer	None
Filter	None
Exposures	45 x 1 Minute Exposures



Observation Notes

Imaged in Full Moon Lit Skies

ISO 800

Unguided