

# Deep Sky Observations

## Object Description

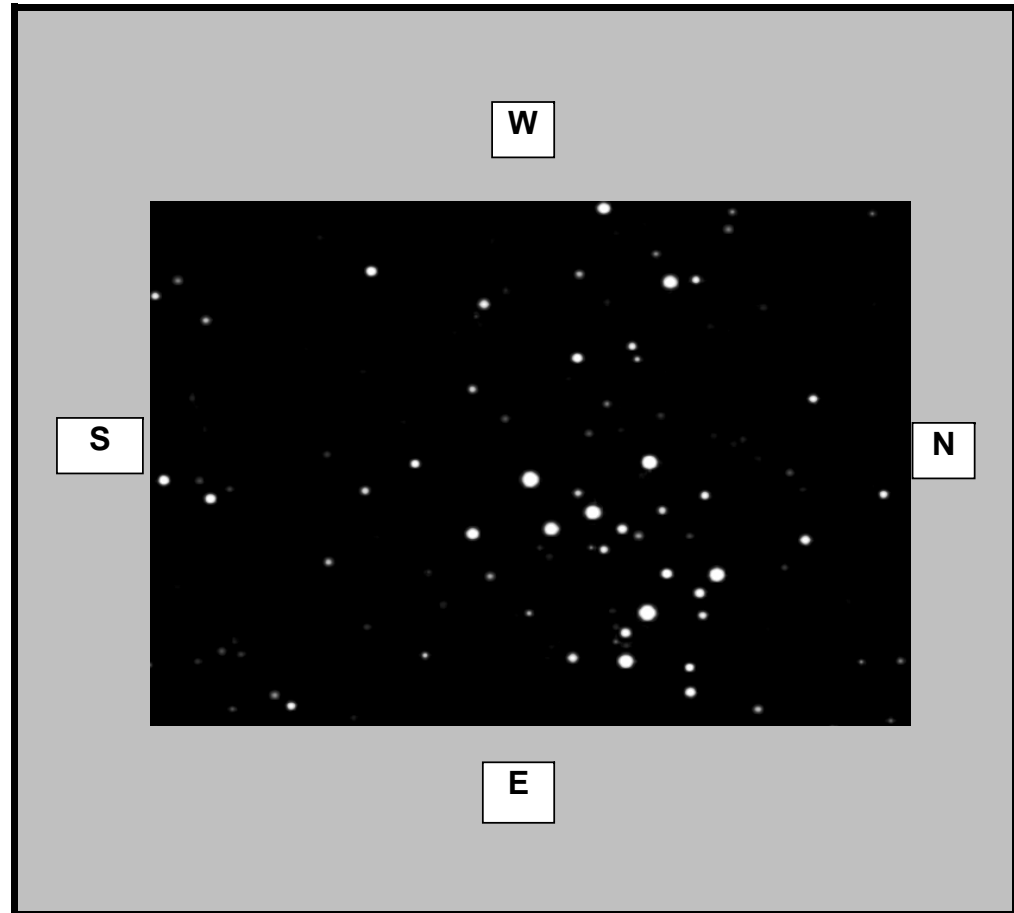
Object Name	
Messier	<b>M29</b>
New General Catalogue	<b>6913</b>
Constellation	<b>Cygnus</b>
Type	<b>Open Cluster</b>
Magnitude	<b>7.10</b>
Distance (Light Years)	<b>4,000</b>
Right Ascension	<b>20 23.5</b>
Declination	<b>+38:31</b>
Size	<b>7.0'</b>
Diameter	
Composition	<b>Estimated 50 Stars</b>

## Observations

Date (DD/MM/YYYY)	<b>09/06/2007</b>
Time (24 hr)	<b>01:15am</b>
Location	<b>Baldrine, Isle of Man</b>
Longitude	<b>4°24' W</b>
Latitude	<b>54°12' N</b>
Seeing (1=High - 5= Low)	1 <b>2</b> 3 4 5
Transparency (1=High - 5= Low)	1 2 <b>3</b> 4 5

## Equipment

Telescope	<b>WO FLT110 4.3inch APO</b>
Mount	<b>EQ6 Skyscan Pro</b>
Eyepiece	<b>None</b>
Barlow	<b>None</b>
Camera	<b>GSTAR-EX CCD</b>
Magnification (Focal Length)	<b>FL=715mm</b>
Field of View (True)	<b>30.01 x 24.07 [2.44 arcsec]</b>
Reducer	<b>None</b>
Filter	<b>None</b>
Exposures	<b>5 Minutes 128X senseup</b>



## Observation Notes

Stacked and aligned using Registax  
 Processed using Registax, Photoshop & IMM

Very average conditions (slightly moist milky sky)