

Deep Sky Observations

Object Description

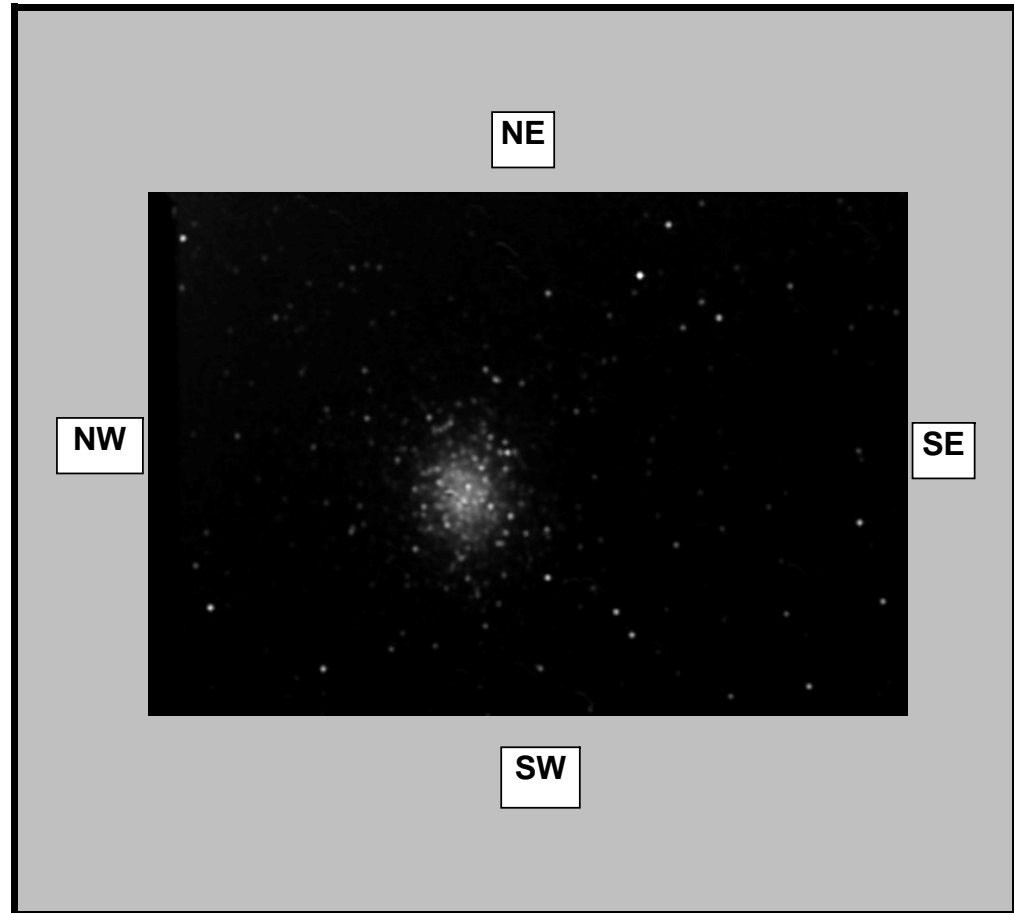
Object Name	
Messier	M14
New General Catalogue	6402
Constellation	Ophiuchus
Type	Globular Cluster
Magnitude	8.32
Distance (Light Years)	30,300
Right Ascension	17 37.3
Declination	-03:14
Size	11.0'
Diameter	50 Light Years
Composition	Around 200,000 Stars

Observations

Date (DD/MM/YYYY)	09/06/2007
Time (24 hr)	01:50 pm
Location	Baldrine, Isle of Man
Longitude	4°24' W
Latitude	54°12' N
Seeing (1=High - 5= Low)	1 2 3 4 5
Transparency (1=High - 5= Low)	1 2 3 4 5

Equipment

Telescope	WO FLT110 4.3inch APO
Mount	EQ6 Skyscan Pro
Eyepiece	None
Barlow	None
Camera	GSTAR-EX CCD
Magnification (Focal Length)	FL=715mm
Field of View (True)	30.01 x 24.07 [2.44 arcsec]
Reducer	None
Filter	None
Exposures	15 Minutes 128X senseup



Observation Notes

Stacked and aligned using Registax

Processed using Registax, Photoshop & IMM

Very average conditions (slightly moist milky sky)