

Deep Sky Observations

Object Description

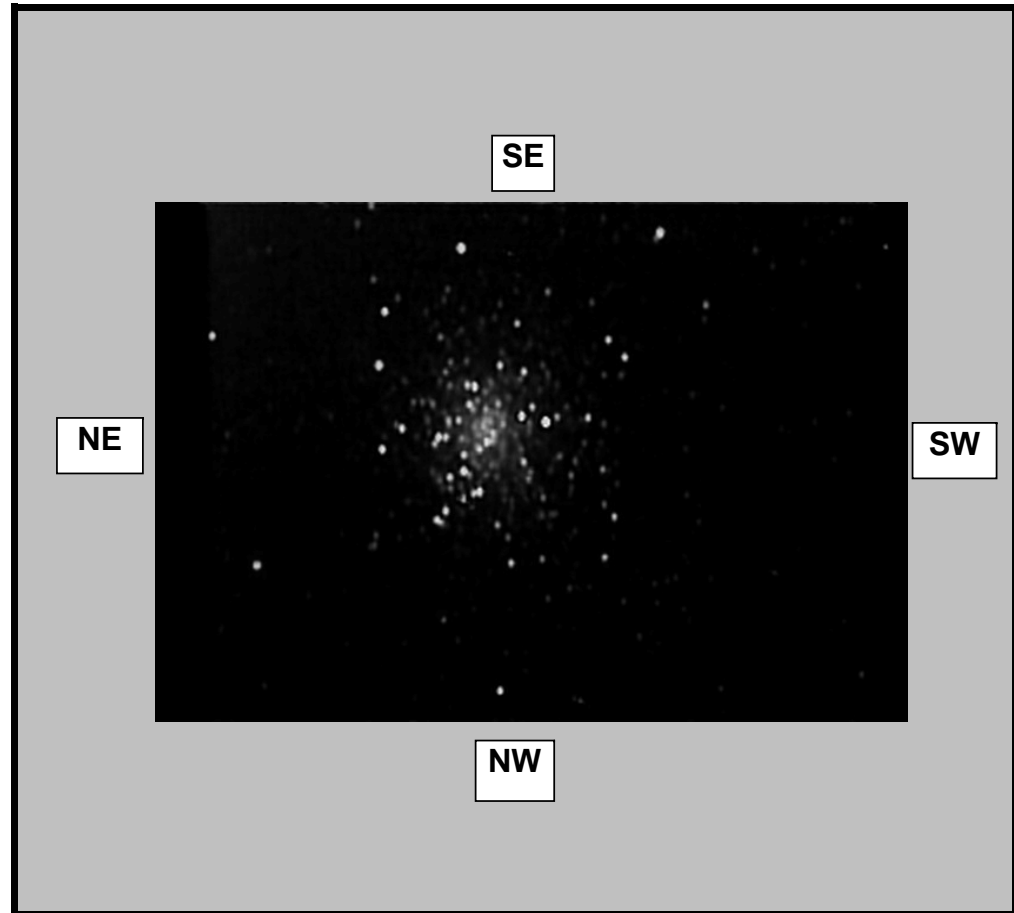
Object Name	
Messier	M12
New General Catalogue	6218
Constellation	Ophiuchus
Type	Globular Cluster
Magnitude	7.68
Distance (Light Years)	16,000
Right Ascension	16 47.1
Declination	-01:56
Size	16.0'
Diameter	75 Light Years
Composition	Estimated 400,000 Stars

Observations

Date (DD/MM/YYYY)	06/06/2007
Time (24 hr)	01:10 am
Location	Baldrine, Isle of Man
Longitude	4°24' W
Latitude	54°12' N
Seeing (1=High - 5= Low)	1 2 3 4 5
Transparency (1=High - 5= Low)	1 2 3 4 5

Equipment

Telescope	WO FLT110 4.3inch APO
Mount	EQ6 Skyscan Pro
Eyepiece	None
Barlow	None
Camera	GSTAR-EX CCD
Magnification (Focal Length)	FL=715
Field of View (True)	30.01 x 24.07 [2.44 arcsec]
Reducer	None
Filter	None
Exposures	15 Minutes 128X senseup



Observation Notes
