

Deep Sky Observations

Object Description

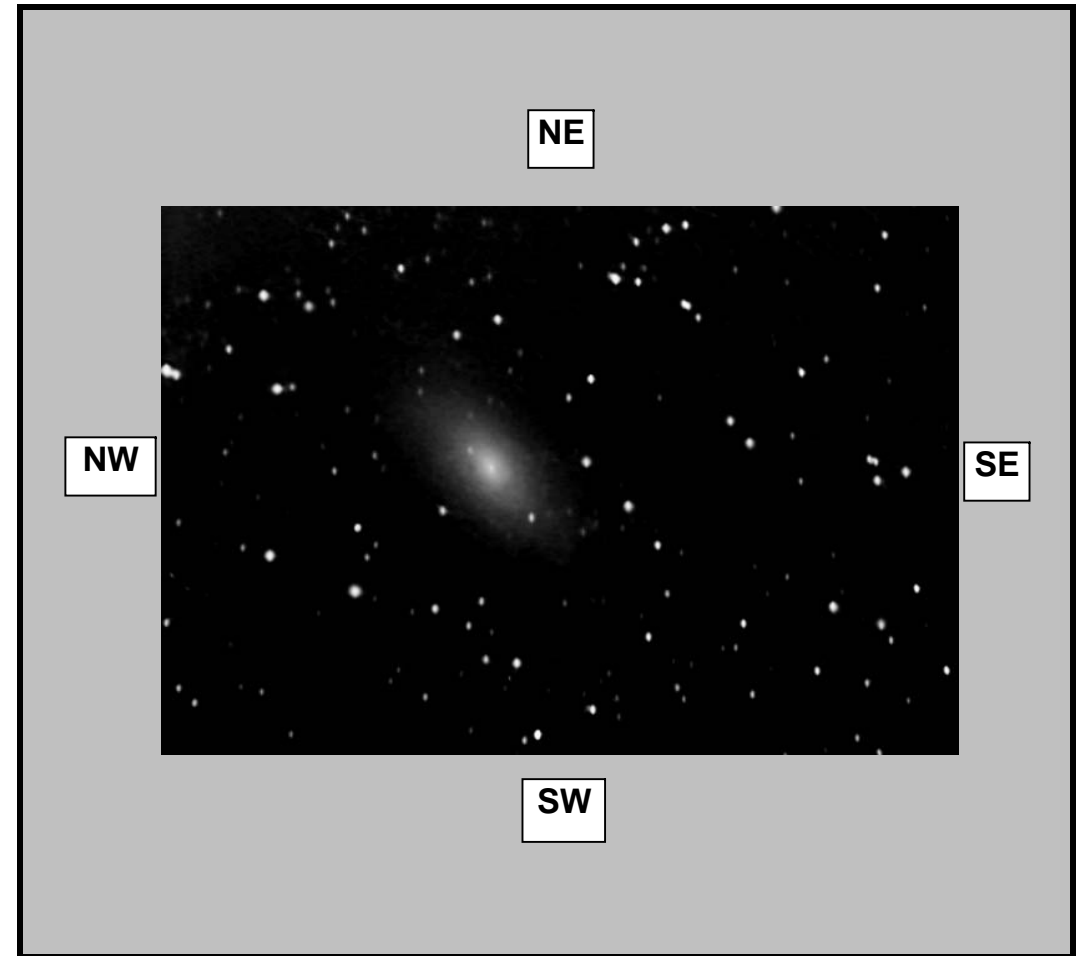
Object Name	_____
Messier	M110
New General Catalogue	205
Constellation	Andromeda
Type	Dwarf Elliptical
Magnitude	8.90
Distance (Light Years)	2.69 Million
Right Ascension	40 22.0
Declination	+41:41
Size	21.9' x 11.0'
Diameter	_____
Composition	_____

Observations

Date (DD/MM/YYYY)	04/09/2007
Time (24 hr)	01:40am
Location	Baldrine, Isle of Man
Longitude	4°24' W
Latitude	54°12' N
Seeing (1=High - 5= Low)	1 2 3 4 5
Transparency (1=High - 5= Low)	1 2 3 4 5

Equipment

Telescope	Takahashi Epsilon 160
Mount	EQ6 Skyscan Pro
Eyepiece	None
Barlow	None
Camera	GSTAR-EX CCD
Magnification (Focal Length)	FL=530mm
Field of View (True)	40.48 x 32.47 [3.29 arcsec]
Reducer	None
Filter	None
Exposures	30 Minutes 128X senseup



Observation Notes

Stacked and aligned using Registax
Processed using Registax, Photoshop & IMM

Deep Sky Observations
