

Deep Sky Observations

Object Description

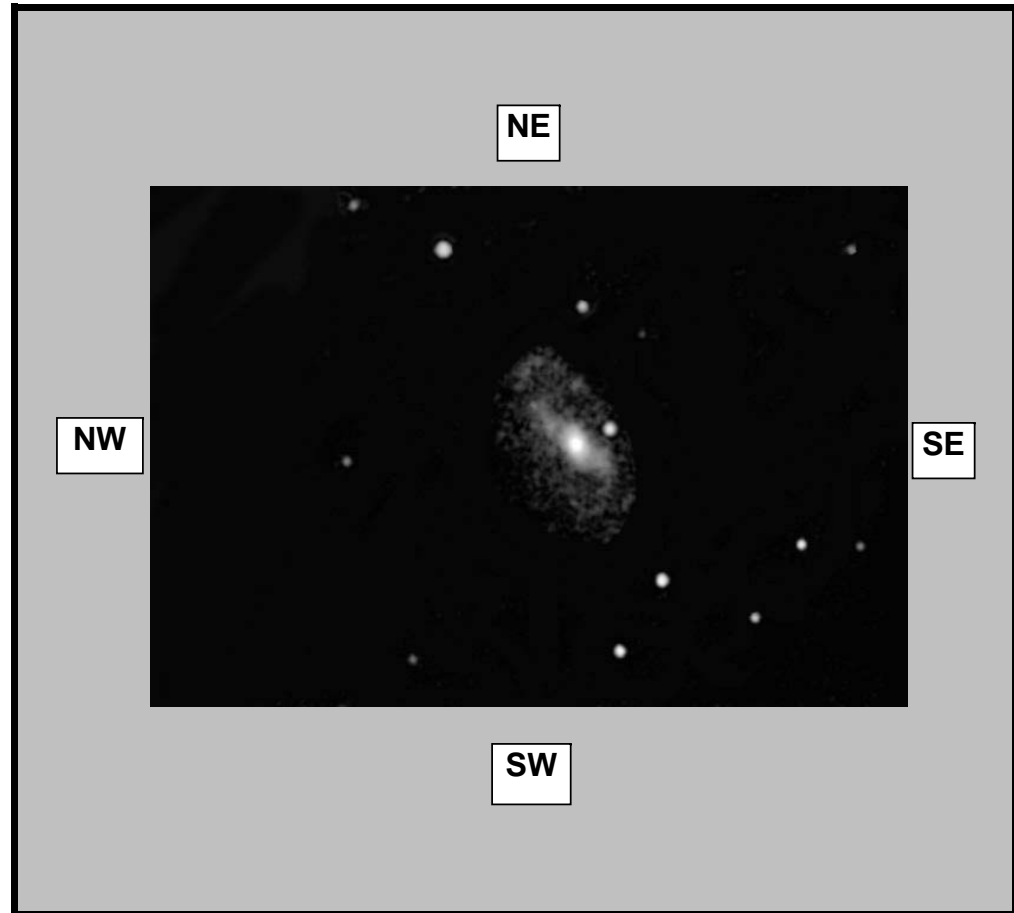
Object Name	
Messier	M109
New General Catalogue	3992
Constellation	Ursa Major
Type	Spiral Galaxy
Magnitude	9.80
Distance (Light Years)	41 Million
Right Ascension	11 57.6
Declination	+53:23
Size	7.6 x 4.7'
Diameter	
Composition	

Observations

Date (DD/MM/YYYY)	9/06/2007
Time (24 hr)	02:40am
Location	Baldrine, Isle of Man
Longitude	4°24' W
Latitude	54°12' N
Seeing (1=High - 5= Low)	1 2 3 4 5
Transparency (1=High - 5= Low)	1 2 3 4 5

Equipment

Telescope	WO FLT110 4.3inch APO
Mount	EQ6 Skyscan Pro
Eyepiece	None
Barlow	TV 2.5x Powermate
Camera	GSTAR-EX CCD
Magnification (Focal Length)	FL=1787.5mm
Field of View (True)	12.0 x 9.63 [0.98 arcsec]
Reducer	None
Filter	None
Exposures	5 Minutes 96X senseup



Observation Notes

Stacked and aligned using Registax
 Processed using Registax, Photoshop & IMM

Very average conditions (slightly moist milky sky)