

Deep Sky Observations

Object Description

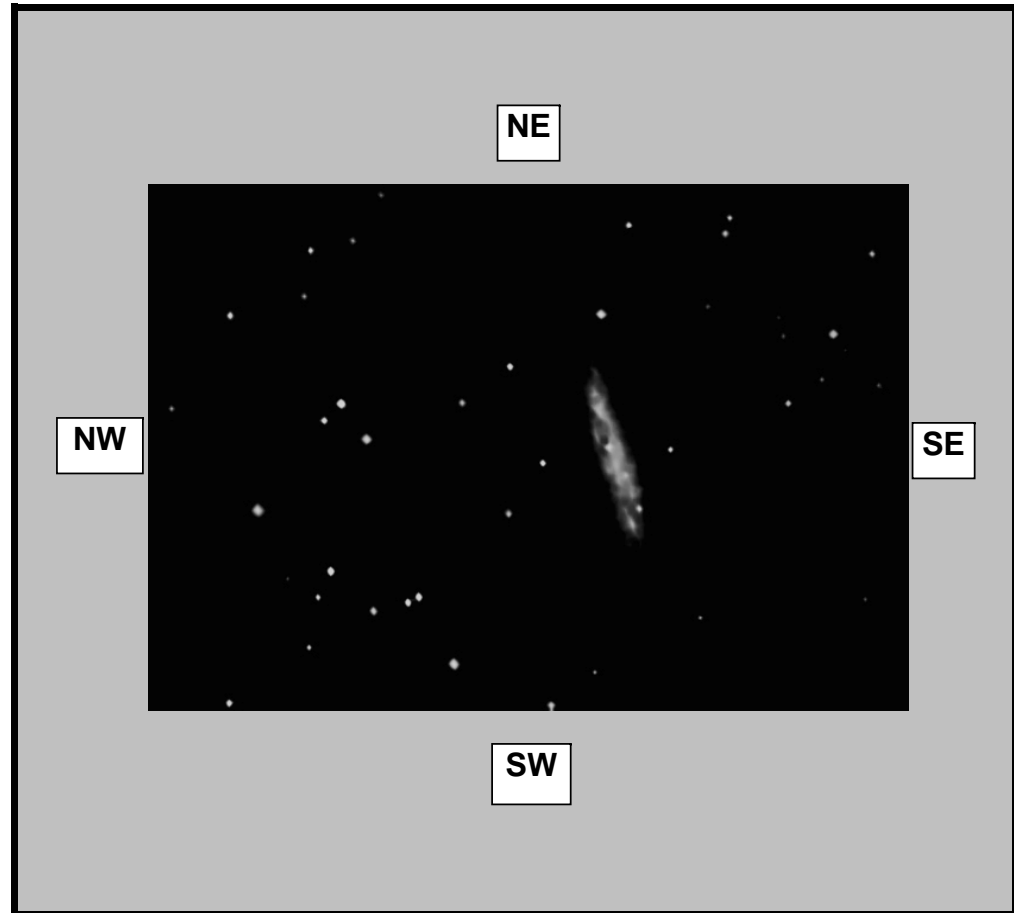
Object Name	
Messier	M108
New General Catalogue	3556
Constellation	Ursa Major
Type	Spiral Galaxy
Magnitude	10.7
Distance (Light Years)	45 Million
Right Ascension	11 11.3
Declination	+53:40
Size	8.7' x 2.2'
Diameter	
Composition	

Observations

Date (DD/MM/YYYY)	09/08/2007
Time (24 hr)	01:00am
Location	Baldrine, Isle of Man
Longitude	4°24' W
Latitude	54°12' N
Seeing (1=High - 5= Low)	1 2 3 4 5
Transparency (1=High - 5= Low)	1 2 3 4 5

Equipment

Telescope	Takahashi Epsilon 160
Mount	EQ6 Skyscan Pro
Eyepiece	None
Barlow	None
Camera	GSTAR-EX CCD
Magnification (Focal Length)	FL=530mm
Field of View (True)	40.48 x 32.47 [3.29 arcsec]
Reducer	None
Filter	None
Exposures	40 Minutes 128X senseup



Observation Notes

Stacked and aligned using Registax
 Processed using Registax, Photoshop & IMM
 Electronic Camera 2x Zoom Applied