

Deep Sky Observations

Object Description

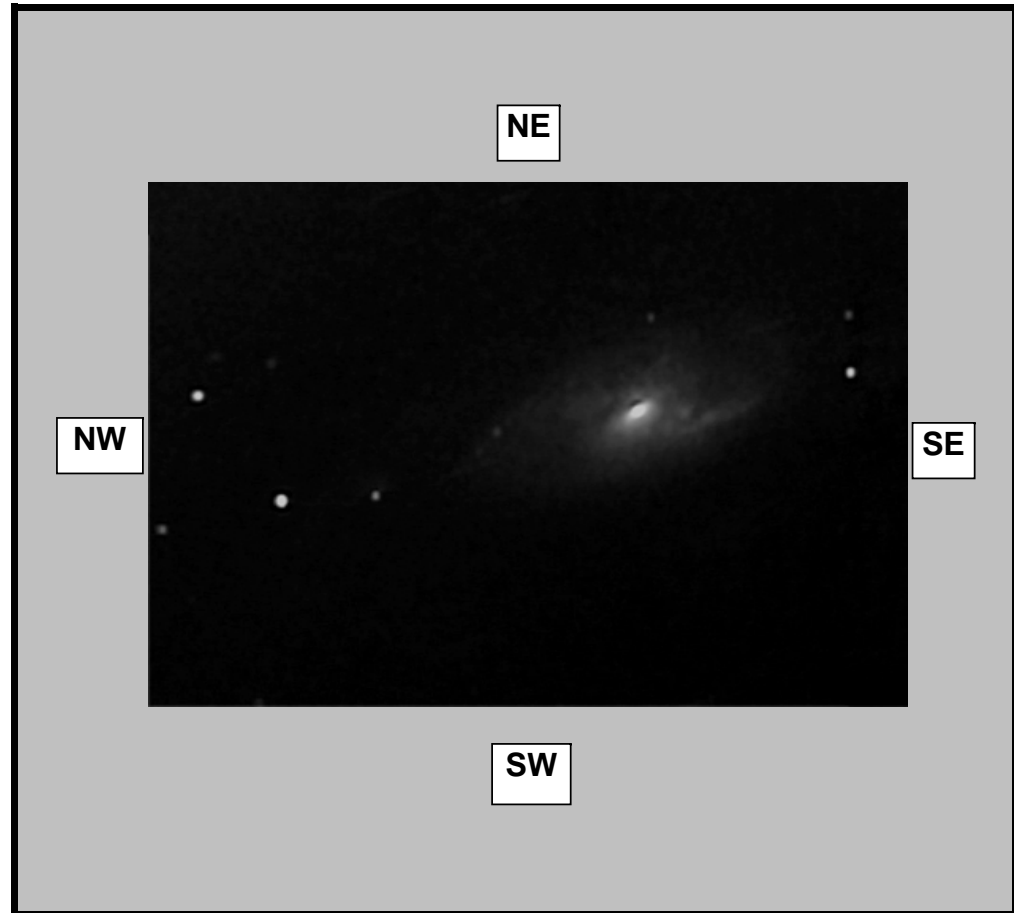
Object Name	
Messier	M106
New General Catalogue	4258
Constellation	Canes Venatici
Type	Spiral Galaxy
Magnitude	9.10
Distance (Light Years)	23.7 Million
Right Ascension	12 18.5
Declination	+47:18
Size	19 x 8'
Diameter	2,500 Light Years
Composition	36 Billion Solar Masses

Observations

Date (DD/MM/YYYY)	21/05/2007
Time (24 hr)	00:40am
Location	Baldrine, Isle of Man
Longitude	4°24' W
Latitude	54°12' N
Seeing (1=High - 5= Low)	1 2 3 4 5
Transparency (1=High - 5= Low)	1 2 3 4 5

Equipment

Telescope	WO FLT110 4.3inch APO
Mount	EQ6 Skyscan Pro
Eyepiece	None
Barlow	None
Camera	GSTAR-EX CCD
Magnification (Focal Length)	FL=715mm
Field of View (True)	30.01 x 24.07 [2.44 arcsec]
Reducer	None
Filter	None
Exposures	10 Minutes 128X senseup



Observation Notes

Stacked and aligned using Registax
 Processed using Registax, Photoshop & IMM