

Deep Sky Observations

Object Description

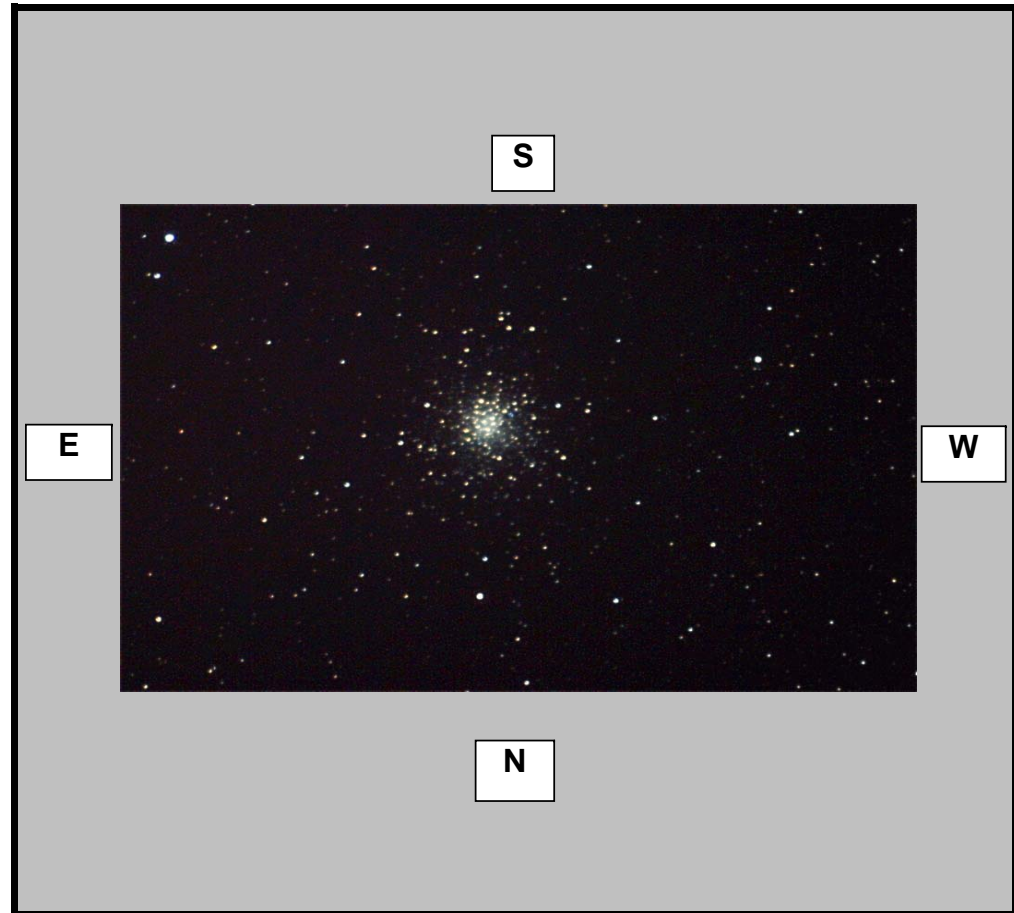
Object Name	
Messier	M10
New General Catalogue	6254
Constellation	Ophiuchus
Type	Globular Cluster
Magnitude	6.40
Distance (Light Years)	14,300
Right Ascension	16 57.0
Declination	-04:05
Size	20.0'
Diameter	83 Light Years
Composition	

Observations

Date (DD/MM/YYYY)	25/05/2008
Time (24 hr)	01:20 am
Location	Baldrine, Isle of Man
Longitude	4°24' W
Latitude	54°12' N
Seeing (1=High - 5= Low)	1 2 3 4 5
Transparency (1=High - 5= Low)	1 2 3 4 5

Equipment

Telescope	Takahashi Epsilon 160
Mount	EQ6 Skyscan Pro
Eyepiece	None
Barlow	None
Camera	Canon Rebel Xti
Magnification (Focal Length)	FL=530mm
Field of View (True)	40.48 x 32.47 [3.29 arcsec]
Reducer	None
Filter	None
Exposures	30 x 60 Second Exposures



Observation Notes

ISO 1600

Imaged in dark skies

Unguided