

Star Observations

Object Description

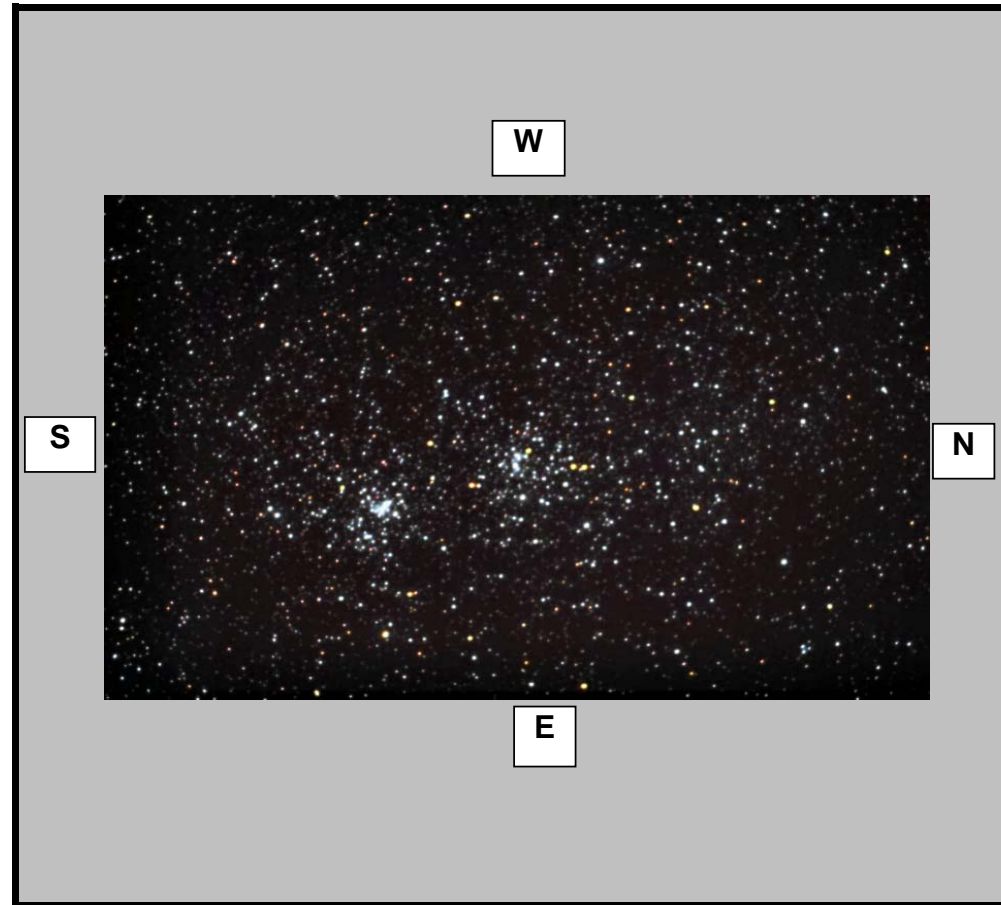
Object Name	<u>Double Cluster</u>
NGC Number	<u>884 & 869</u>
Constellation	<u>Perseus</u>
Type	<u>Open Cluster (Double)</u>
Magnitude	<u>4.3</u>
Distance (Light Years)	<u>7,000</u>
Seperation	<u></u>
Right Ascention	<u>2 20.0</u>
Declination	<u>+57:408</u>
Size	<u>60.0'</u>

Observations

Date (DD/MM/YYYY)	<u>24/02/2008</u>
Time (24 hr)	<u>10:10 pm</u>
Location	<u>Baldrine, Isle of Man</u>
Longitude	<u>4°24' W</u>
Latitude	<u>54°12' N</u>
Seeing (1=High - 5= Low)	<u>1 2 3 4 5</u>
Transparency (1=High - 5= Low)	<u>1 2 3 4 5</u>

Equipment

Telescope	<u>Tak Epsilon 160</u>
Mount	<u>EQ6 Skyscan Pro</u>
Eyepiece	<u>None</u>
Barlow	<u>None</u>
Camera	<u>Canon EOS 350 DSLR</u>
Magnification (Focal Length)	<u>FL=530mm</u>
Field of View (True)	<u>143.45 x 95.64 [2.49 arcsec]</u>
Reducer	<u>None</u>
Filter	<u>None</u>
Exposures	<u>60 x 40 Second Exposures</u>



Observation Notes

At ISO 1600

Imaged in 1/4 Moonlit Skies

Autoguided Using GPUSB & Metaguide