

Deep Sky Observations

Object Description

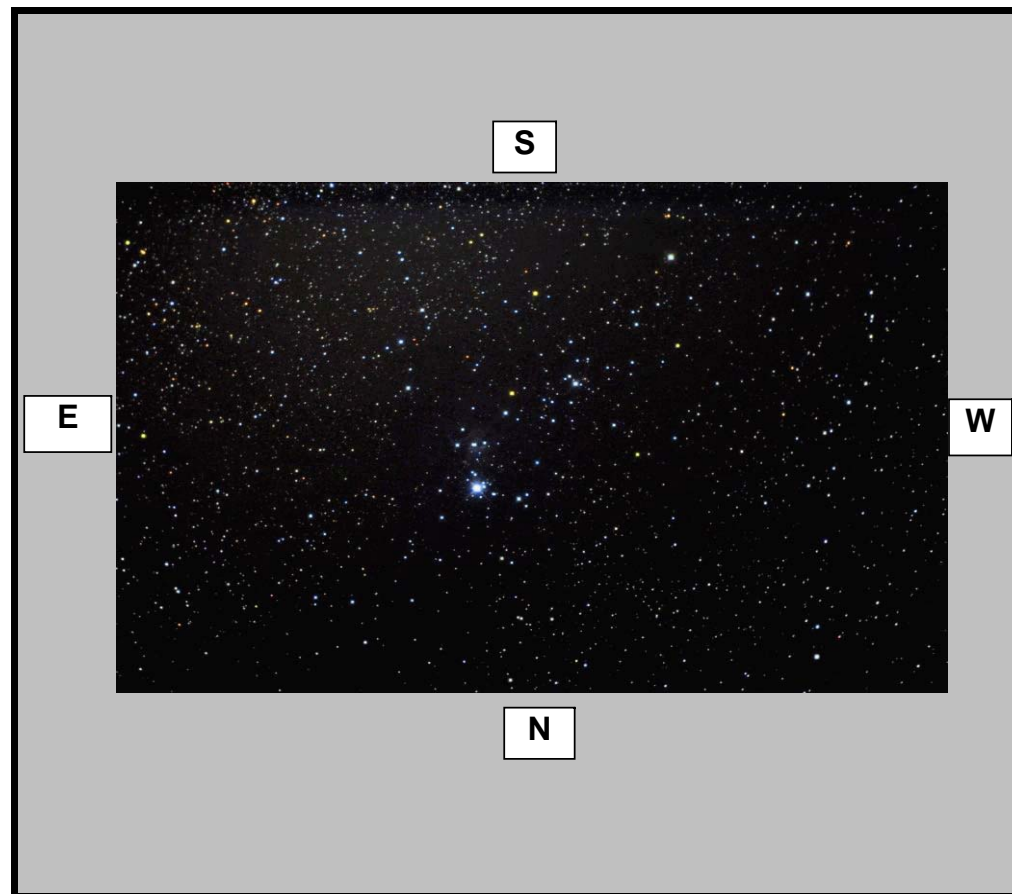
Object Name	<u>Christmas Tree Cluster</u>
New General Catalogue	<u>2264</u>
Constellation	<u>Monoceros</u>
Type	<u>Open Cluster</u>
Magnitude	<u>3.9</u>
Distance (Light Years)	<u>2,600</u>
Right Ascension	<u>06 41.0</u>
Declination	<u>+09:53</u>
Size	<u>20',0</u>
Diameter	<u></u>
Composition	<u></u>

Observations

Date (DD/MM/YYYY)	<u>13/02/2008</u>
Time (24 hr)	<u>11:10 pm</u>
Location	<u>Baldrine, Isle of Man</u>
Longitude	<u>4°24' W</u>
Latitude	<u>54°12' N</u>
Seeing (1=High - 5= Low)	1 <u>2</u> 3 4 5
Transparency (1=High - 5= Low)	1 <u>2</u> 3 4 5

Equipment

Telescope	<u>Takahashi Epsilon 160</u>
Mount	<u>EQ6 Skyscan Pro</u>
Eyepiece	<u>None</u>
Barlow	<u>None</u>
Camera	<u>Canon EOS 350 DSLR</u>
Magnification (Focal Length)	<u>FL=530mm</u>
Field of View (True)	<u>40.48 x 32.47 [3.29 arcsec]</u>
Reducer	<u>None</u>
Filter	<u>None</u>
Exposures	<u>90 x 30 Second Exposures</u>



Observation Notes

ISO 1600

Moonlit skies

Autoguided using GPUSB & K3CCDTools