

# Double Star Observations

## Object Description

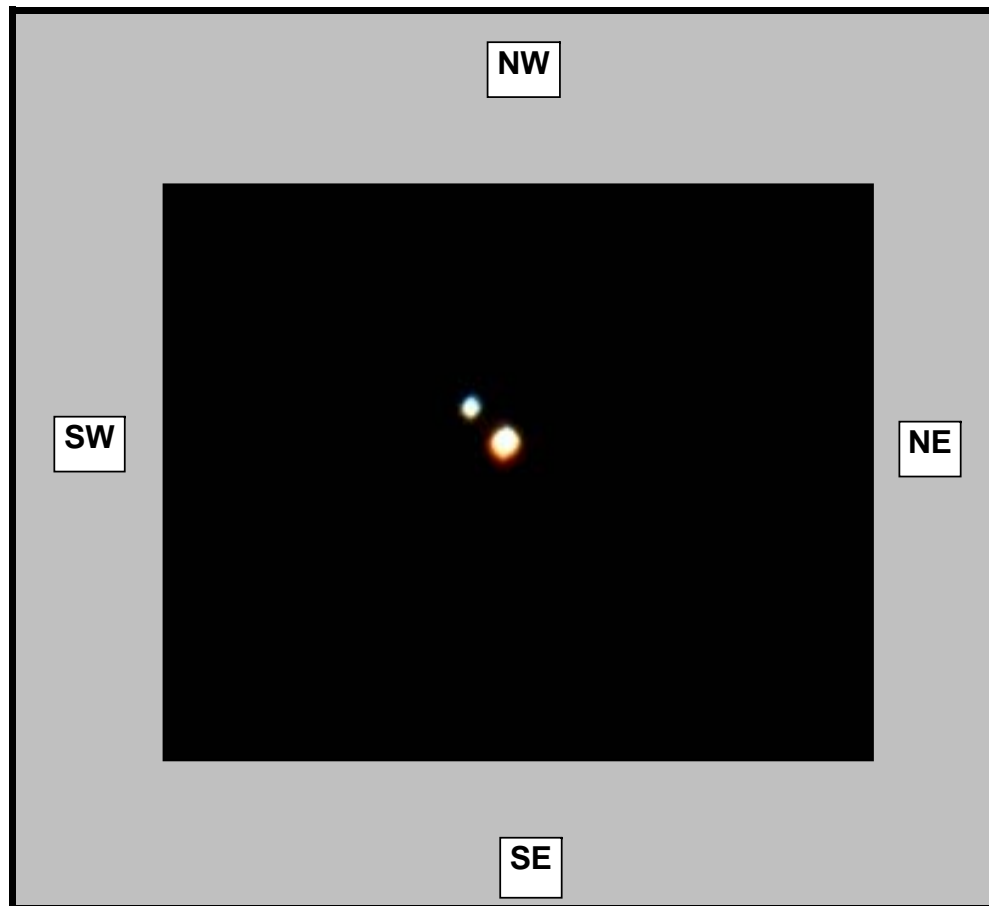
**Object Name** Albireo  
**SAO Number** 87301  
**Constellation** Cygnus  
**Type** Binary Star  
**Magnitude** 3.05 / 5.10  
**Distance (Light Years)** 380.0  
**Seperation** 34.4  
**Right Ascention** 19 30.0  
**Declination** +27:58  
**Size** 0.1'

## Observations

**Date (DD/MM/YYYY)** 28/05/2006  
**Time (24 hr)** 01:30 am  
**Location** Baldrine, Isle of Man  
**Longitude** 4°24' W  
**Latitude** 54°12' N  
**Seeing (1=High - 5= Low)** 1 2 3 4 5  
**Transparency (1=High - 5= Low)** 1 2 3 4 5

## Equipment

**Telescope** WO FLT110 4.3inch APO  
**Mount** EQ6 Skyscan Pro  
**Eyepiece** Televue 6mm Radian 1.25  
**Barlow** Televue 4X Powermate  
**Camera** Canon EOS350D  
**Magnification** 476X  
**Field of View (True)** \_\_\_\_\_  
**Reducer** None  
**Filter** None  
**Exposures** Single 10 second exposure



## Observation Notes

Westerly wind around 22mph, fairly mild night.  
Great night for viewing, too breezy for astro-photography.  
Didn't reach total darkness until 12:10am  
Occasional cloud cover - Total cloud cover at -2:20am  
 \_\_\_\_\_  
 \_\_\_\_\_